



# BRAND NEW PRODUCTS 2010



Professional building solution

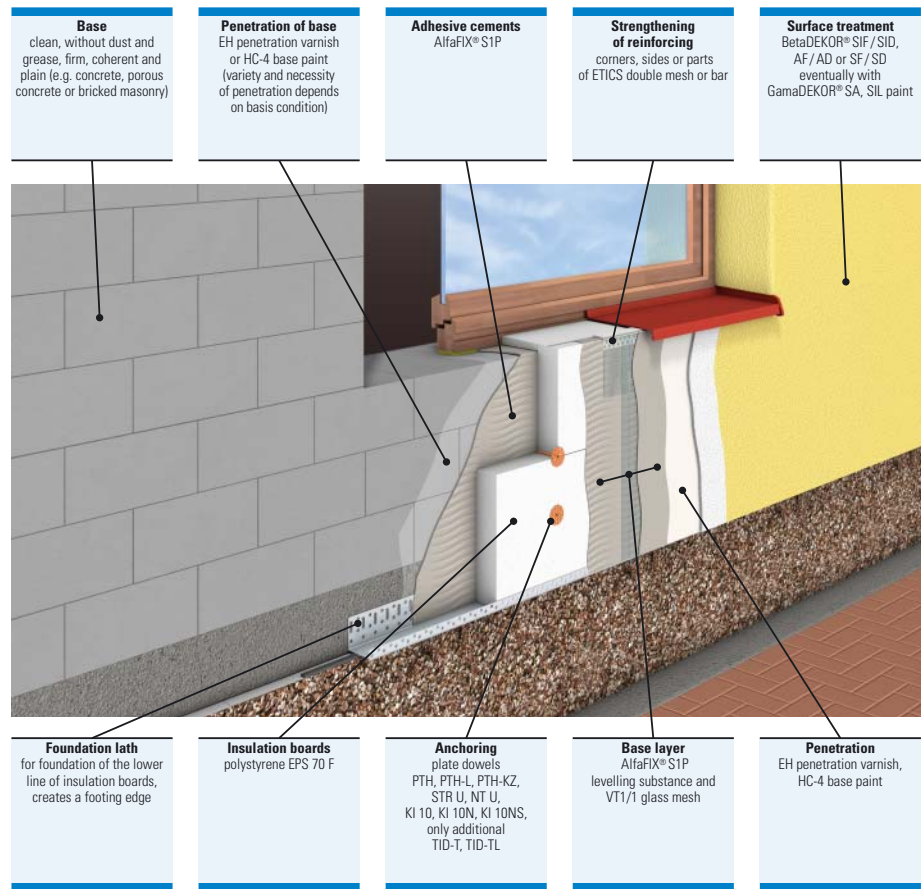


# stomixTHERM® PRIMA



## External contact thermal insulation system using the polystyrene insulation boards

The insulation system stomix-THERM® PRIMA, that uses the polystyrene insulation boards, is more simple technical and economical version compared to the system stomix-THERM® alfa. However also this system conforms to all strict European requirements on the peripheral wall insulation and uses the mark CE. This system fits mainly to the use of universal adhesive and levelling material AlfaFIX® S1P which enlarges the range of proven adhesive and levelling materials.



## AlfaFIX® S1P

① Catalogue No.: 632001



Dry adhesive and levelling material. It is used for bonding of insulation boards of polystyrene and for creation of flexible basic layer of external thermal insulation composite system stomixTHERM® PRIMA.

### Advantages:

- universal material = bonding as well as levelling
- high adhesion to chosen kinds of materials
- hardened material ensures frost resistant bonding
- combined with glass mesh it creates limited flexible joint-less layer



**Colouring:** produced in grey and white colours

**Packing:** bag 25 kg

**Consumption:** approximately 2.7–5.0 kg / m<sup>2</sup>, depending on the use, use of bonding and flatness of the base

**Spreading capacity:** about 6.5 m<sup>2</sup> / bag (25 kg), depending on the use, use of bonding and flatness of the base

**Dilution:** 100 weight parts of dry substance 24 to 27 weight parts of drinking water

## Plate dowel, plastic stud, KI 60/10

① Catalogue No.: 531600

Hammering plastic plate dowel with European approval ETA for insulation system stomixTHERM® PRIMA.

**Diameter of the plate:** 60 mm

**Diameter of the drill:** 10 mm

**Anchoring depth:** 50 mm

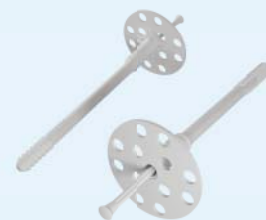
**Dowel material:** polypropylene

**Expanding stud – material:** polyamide reinforced with glass fibres

**Use:** concrete, stone, full brick, cross-hole brick

**Producer:** Koelner

T - dowel	Cat. No.	T - dowel	Cat. No.
KI 60/10-70	531607	KI 60/10-160	531616
KI 60/10-90	531609	KI 60/10-180	531618
KI 60/10-120	531612	KI 60/10-200	531620
KI 60/10-140	531614	KI 60/10-220	531622



## Plate dowel, metal stud, KI 60/10N

① Catalogue No.: 533000

Plastic hammering plate dowel with metal stud with European approval ETA and long expanding zone for insulation system stomixTHERM® PRIMA.

**Diameter of the plate:** 60 mm

**Diameter of the drill:** 10 mm

**Anchoring depth:** 90 mm

**Dowel material:** polypropylene

**Expanding stud – material:** galvanized steel

**Use:** concrete, stone, full brick, cross-hole brick

T - dowel	Cat. No.	T - dowel	Cat. No.
KI 60/10N-120	533012	KI 60/10N-200	533020
KI 60/10N-140	533014	KI 60/10N-220	533022
KI 60/10N-160	533016	KI 60/10N-260	533026
KI 60/10N-180	533018	KI 60/10N-300	533030

**Producer:** Koelner



## Plate dowel, metal screw, KI 60/10NS

① Catalogue No.: 533100

Screw-in plate dowel with metal screw with European approval ETA and long expanding zone for insulation system stomixTHERM® PRIMA.

**Diameter of the plate:** 60 mm

**Diameter of the drill:** 10 mm

**Anchoring depth:** 90 mm

**Dowel material:** polypropylene

**Expanding stud – material:** galvanized steel

**Use:** concrete, stone, full brick, cross-hole brick

T - dowel	Cat. No.	T - dowel	Cat. No.
KI 60/10NS-140	533114	KI 60/10NS-220	533122
KI 60/10NS-160	533116	KI 60/10NS-260	533126
KI 60/10NS-180	533118	KI 60/10NS-300	533130
KI 60/10NS-200	533120		

**Producer:** Koelner



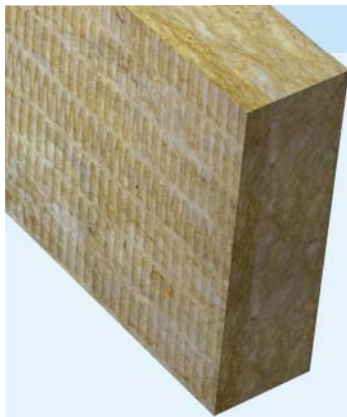
# stomixTHERM® beta F



External contact thermal insulation system using double-layer insulation boards made of mineral wool

The insulation system stomixTHERM® beta F is based on usage of double-layer thermal insulation board of mineral wool. This is a board of new generation, with longitudinal fibre direction and upper layer reinforcement which ensures high resistance to the mechanical stress. This side, designed by a writing, must be fixed outwards the facade!

Use the dowels ETICS – ejotherm STR U, determined for anchoring, and the underlining plates VT 90 or SBL 140 plus for anchoring.



## FrontRock MAX E

② Catalogue No.: 556300/556400

New generation board with the longitudinal fibre orientation and reinforced upper layer. Wall air permeability is preserved. Intended for the external thermal insulation contact system stomixTHERM® beta F.

### Advantages:

- very good thermal insulating features
- nonflammability
- steam permeability
- water-repellent and moisture-resistant

**Dimensions:** 1 000×500 (600) mm

**Coefficient of thermal conductance  $\lambda_p$ :**  
0,036 W/mK

**Fire class:** A1 (dle CSN 730810)

**Manufacturer:** Rockwool

FrontRock MAX E	Cat. No.	FrontRock MAX E	Cat. No.
1000×0500×060	556306	1000×0600×060	556406
1000×0500×070	556307	1000×0600×070	556407
1000×0500×080	556308	1000×0600×080	556408
1000×0500×100	556310	1000×0600×100	556410
1000×0500×120	556312	1000×0600×120	556412
1000×0500×140	556314	1000×0600×140	556414
1000×0500×160	556316	1000×0600×160	556416
1000×0500×180	556318	1000×0600×180	556418
1000×0500×200	556320	1000×0600×200	556420
1000×0500×220	556322	1000×0600×220	556422
1000×0500×240	556324	1000×0600×240	556424

## Additional plate VT90

① Catalogue No.: 534103



Additional plate that is suitable for double-layer mineral insulation boards (FrontRock MAX E).

- high rigidity of plate ensures clear plate tightening
- trouble free assembly

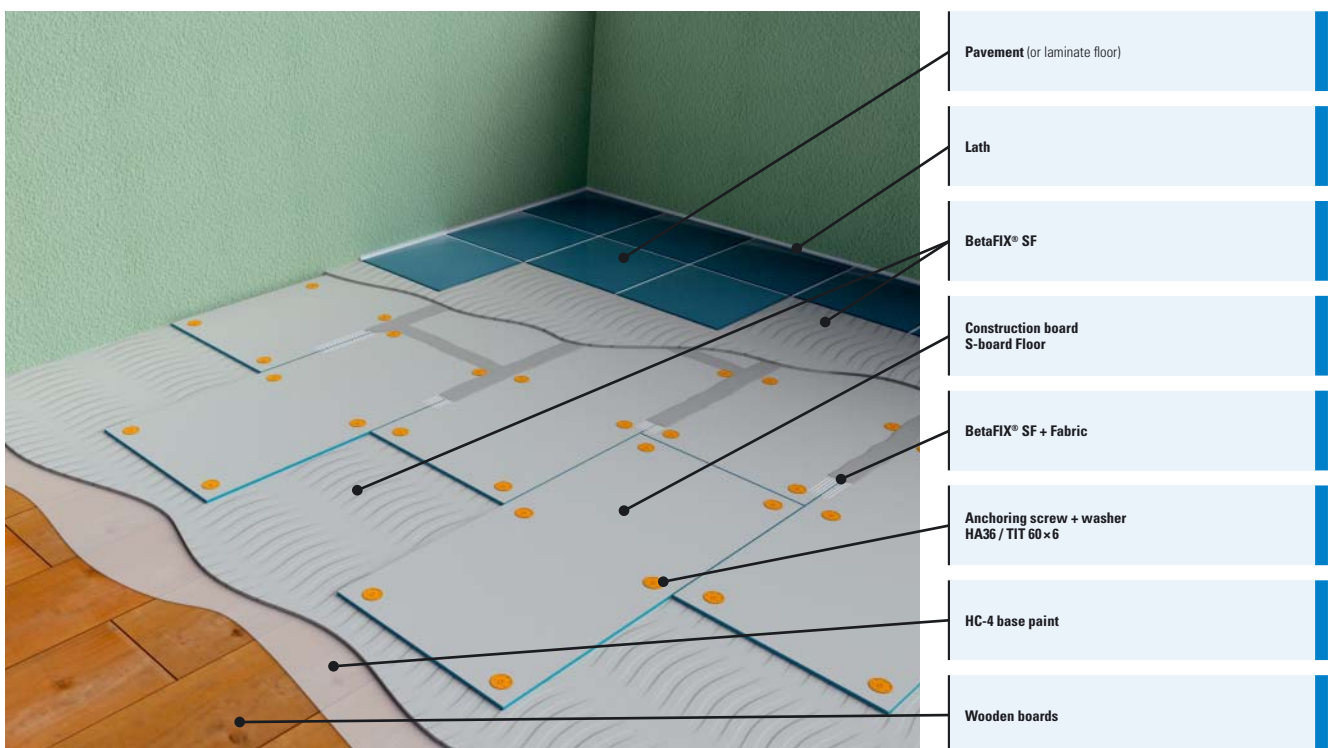
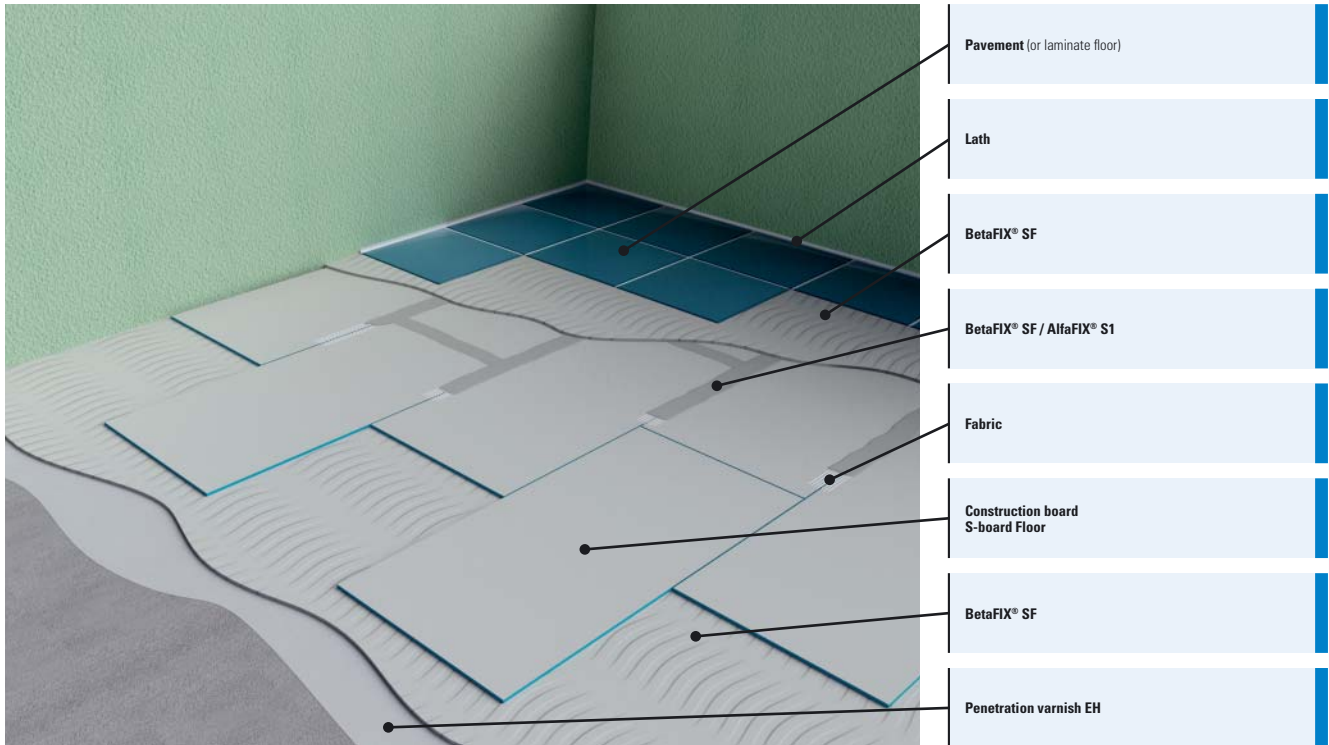
**Disc diameter:** 90 mm

**Producer:** Rockwool, Ejot

# S-board Floor

## Construction board for interior floors

Boards S-board Floor are determined for surface treatment of interior floors. They are of use as a foundation under floating floors, parquets, pavings etc. Their use is effective especially in case of floor heating installation as they prevent from heat losses and considerably increase the floor temperature starting after its switching on.



## USAGE

This sandwich floor solution is very quick and effective solution for levelling and insulation of interior floors. Construction boards S-board Floor are compound of high quality extruded polystyrene of which both sides are covered by polymer-cement levelling material, reinforced by glass fibre network. These plates does not soak up and do not get damaged by water. Combined with ceramic pavements they are an ideal solution for "wet" operations. The floor boards S-board Floor are suitable for use in rooms where the water vapours condensate (bathrooms, swimming pools, ...), or in places with increased requirements on the hydro-insulation or thermal insulation (nursing houses, flats for seniors and disabled persons, public social institutions etc.). These boards are used to a great degree combined with electric floor heating as they insulate the electric heating mats and cables from the floor construction and prevent the energetic losses.

## ADVANTAGES

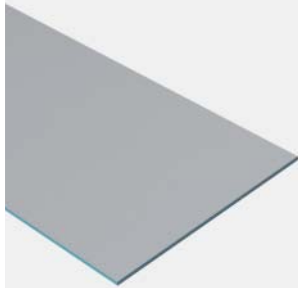
- unique thermal insulation and mechanical properties at the low weight and simple workability
- boards limiting heat losses due to the foundation
- they can be used also for volume unstable foundations
- low construction height of floor system
- simple assembly
- long-term service life

## RECOMMENDED PROCEDURE

Before you start the bonding of boards S-board Floor it is necessary to consider the actual foundation and eventually to redevelop it (ensure its cohesion, flatness and treatment related to the construction). Such treated surface is equipped with penetration paint (penetration varnish EH or base paint HC-4). Then bond the boards S-board Floor by means of bonding material BetaFIX® SB, eventually BetaFIX® SF. Boards shall be put by their longer side to the construction. In addition, boards bonded on volume unstable foundation (eventually wooden floors) are anchored by holders of insulation and screws. Joints between plates are subsequently reinforced by stripes of fabric VT1/1, put into the levelling material AlfaFIX® S1, eventually BetaFIX® SF. The pavement is bonded also by the material BetaFIX® SF. During the final surface treatment we recommend usage of terminal and corner laths. Final pavement jointing can be done first two days after bonding. In case of requirement on high water-proof floor feature, use double layer of BetaFORM® H01 paint on desired places before the pavement laying.

## S-board Floor

①



Construction boards S-board Floor are compound of high quality extruded polystyrene of which both sides are covered by polymer-cement levelling material, reinforced by glass fibre network. Boards S-board Floor are determined for surface treatment of interior floors. They are of use as a foundation under floating floors, parquets, pavings etc. Their use is effective especially in case of floor heating installation as they prevent from heat losses and considerably increase the floor temperature starting after its switching on.

### Advantages:

- unique thermal insulation and mechanical properties at the low weight and simple workability
- boards limiting heat losses due to the foundation
- they can be used also for volume unstable foundations
- low construction height of floor system
- simple assembly
- long-term service life

S-board Floor	Cat. No.
S-board Floor 1250×600×6 mm	701206
S-board Floor 1250×600×10 mm	701210
S-board Floor 2500×600×6 mm	702506
S-board Floor 2500×600×10 mm	702510

## Insulation holder HA36

②

Catalogue No.: 700000



Additional plate made out of stainless steel for fixing the construction boards S-board Floor.

- trouble-free installation

**Plate diameter:** 36 mm

**Inner hole diameter:** 5 mm

**Producer:** Fischer

## BetaDEKOR® SAD

① Catalogue No.: 610700

## BetaDEKOR® SAF

① Catalogue No.: 610800

Water-soluble silicone thin rustic renders with stippled (SAF) or rilled (SAD) structure.

### Advantages:

- low wettability with pearling effects same as for silicone materials
- high vapour permeability
- resistance to dust settlement
- long-term resistance to atmospheric effects and UV radiation
- additives against algae, fungi and moulds
- water washable

**Colouring:** produced in the colour scale reduced by tints of groups a, b



**Packing:** bucket 25 and 15 kg

### Graining:

Size of grain (mm)	1.5	2	2.5	3
BetaDEKOR® SAF	15	20	–	30
BetaDEKOR® SAD	–	20	25	30

**Consumption:** approximately 2.4–4.0 kg/m<sup>2</sup> according to the thickness of grain

**Spreading capacity:** approximately 7.8 m<sup>2</sup>/bucket (25 kg) according to the thickness of grain

**Dilution:** the substance is delivered in paste consistency and can be diluted with max. of 2 % of water



## Plate dowel, metal screw, PTH-S 60/8

① Catalogue No.: 532600

Screw-in plate dowel with European approval ETA, with pre-mounted steel screw. Suitable for aeroconcrete. Special expanding screw with extreme large diameter of thread body ensures high capacity and small move.

**Diameter of the plate:** 60 mm

**Diameter of the drill:** 8 mm

**Anchoring depth:** 65 mm for aeroconcrete

**Dowel material:** polypropylene

**Expanding stud – material:** galvanized steel

**Use:** full brick, cross-hole brick, expanded concrete, aeroconcrete

**Producer:** Bravoll

T - dowel	Cat. No.	T - dowel	Cat. No.
PTH-S 60/8-95	532609	PTH-S 60/8-215	532621
PTH-S 60/8-115	532611	PTH-S 60/8-235	532623
PTH-S 60/8-135	532613	PTH-S 60/8-255	532625
PTH-S 60/8-155	532615	PTH-S 60/8-275	532627
PTH-S 60/8-175	532617	PTH-S 60/8-295	532629
PTH-S 60/8-195	532619		

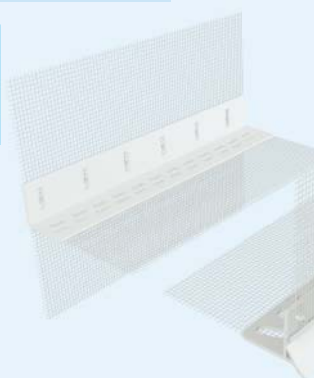


## Foundation set ETICS

① Catalogue No.: 502000

The foundation set ETICS is an universal solution for different thicknesses of insulation systems of series stomix-THERM®. It is compound of two laths – foundation profile and drain profile. This set conforms to requirements on fire protection within the zone of ETICS foundation. It minimizes the heat losses and replaces the foundation made of aluminium lath.

Foundation set ETICS contains	Cat. No.
Foundation lath ETICS (2 m)	502000
Lath under drip PVC UV 10/10 (2 m)	503302
Lath under drip PVC UV 10/15 (2 m)	503303

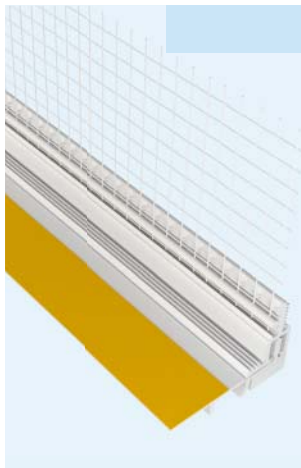


## T finishing lath

② Catalogue No.: 547302

Finishing lath made out of aluminium sheet in various tints (RAL). The lath is offered in the length of 2m and serves for finishing the tile pavement at the balcony edge.



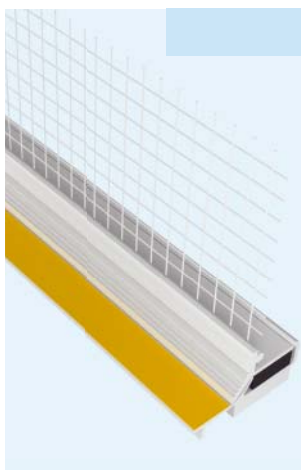


### Window cleaning lath PVC 2D

① Catalogue No.: 50302D

Self-adhesive cleaning lath to transfer movements in both directions. It is made of non-softened PVC with sealing strip and integrated mesh for creation of permanent

flexible joint of renders of thermal insulation systems of series stomixTHERM® with window or door openings.  
**Size:** 140 and 240 cm



### Window cleaning lath PVC 3D

① Catalogue No.: 50303D

Self-adhesive lath to transfer movements in three directions. It is made of non-softened PVC with sealing strip and integrated mesh for creation of permanent flexible joint of renders of thermal insulation systems of series stomixTHERM® with window or door openings.

It is suitable for low-energetic and passive houses. Recommended for large openings – windows matching supporting construction and lateral windows.  
**Size:** 140 and 240 cm



**STOMIX, spol. s r. o.**  
790 65 Žulová 178  
Czech Republic  
tel.: +420 584 484 111  
fax: +420 584 484 112  
e-mail: sales@stomix.cz

**www.stomix.com**

